

RAK7266 WisGate Soho Lite Quick Start Guide

Access the Gateway

In this section, two methods of accessing the gateway are provided to offer different alternatives based on the availability of the required resources.

Wi-Fi AP Mode

By default, the gateway will work in WiFi AP Mode which means that you can find an SSID named like **RAK7266_XXXX** on your PC's WiFi network list. **XXXX** is the last two bytes of the gateway's MAC address.

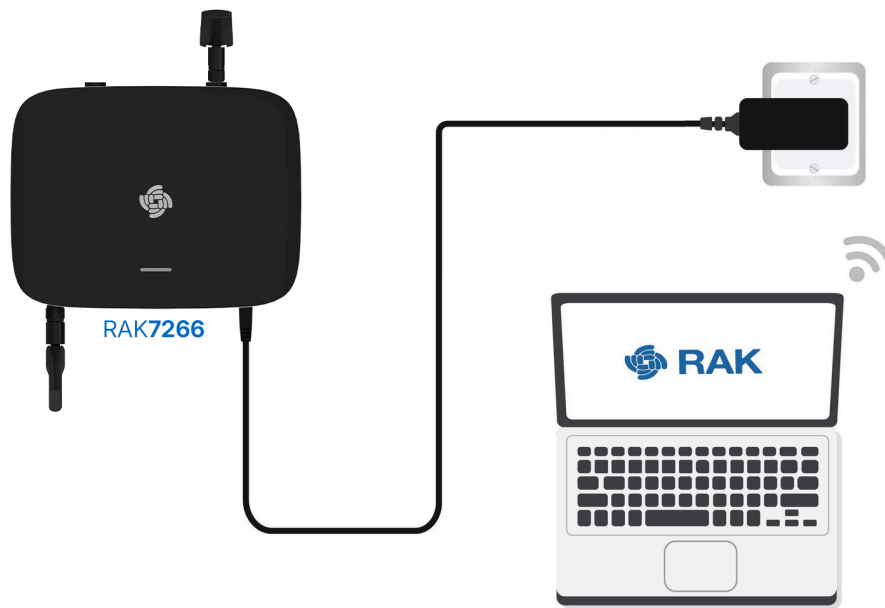


Figure 1: Accessing the gateway via WiFi AP Mode

1. Connect to the gateway' s WiFi.

NOTE

No password is required to connect via WiFi.

2. Open a web browser and enter the IP address: `192.168.230.1`
3. On the first login, you must set a login password. The password must meet the following requirements:
 - o At least 12 characters long
 - o Has at least one special character (`! "#$%& \ '()*+,-./:;<=>?@[]^_`{|}~`)
 - o Has at least one number
 - o Has at least one standard Latin letter (used in the English alphabet)

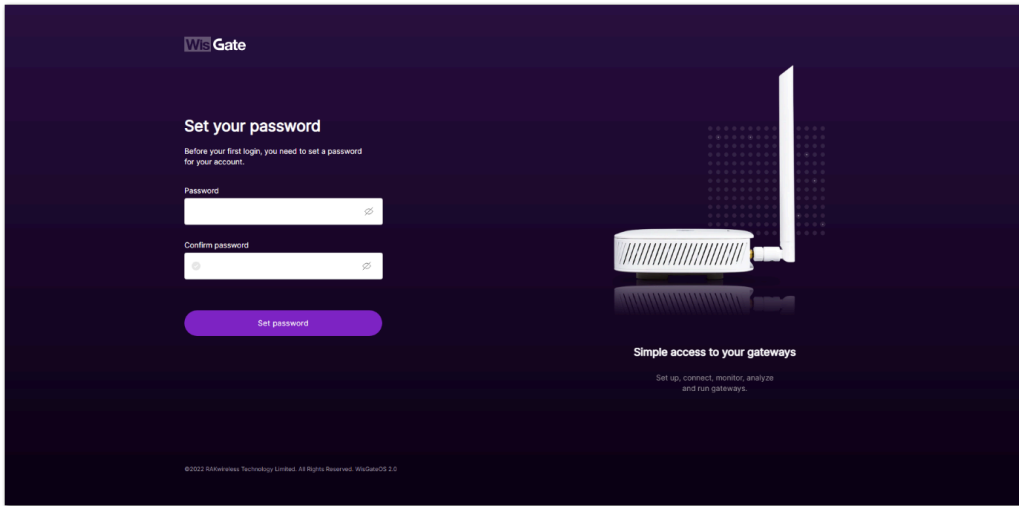


Figure 2: Web UI login page

4. Click **Set password** to continue. You will be redirected to the **LoRaWAN Statistics** page.

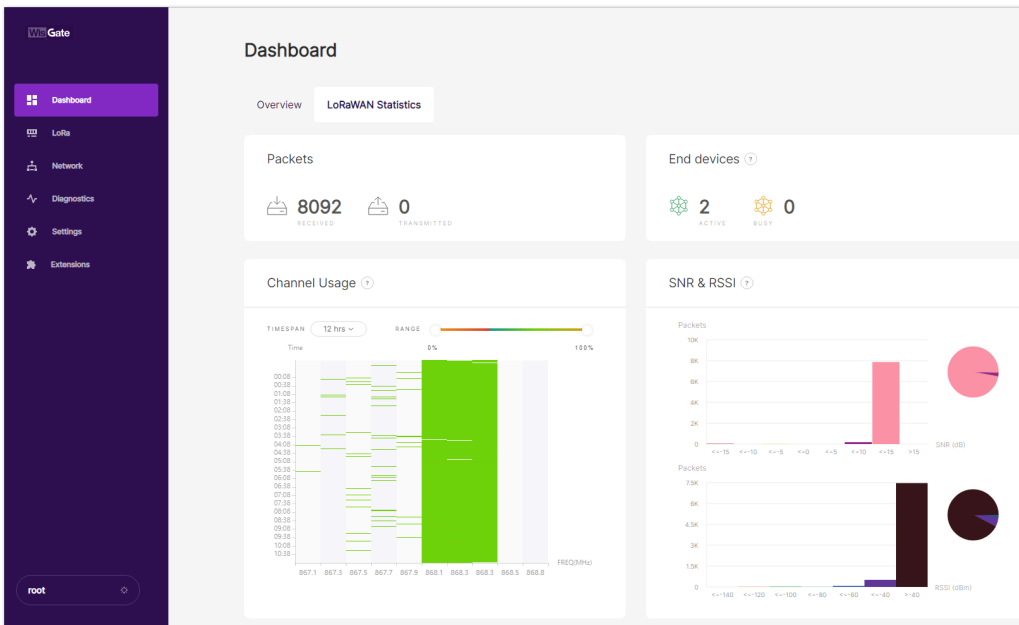


Figure 3: LoRaWAN statistics page

5. On the next login, use the password you set. The default login username is **root**.

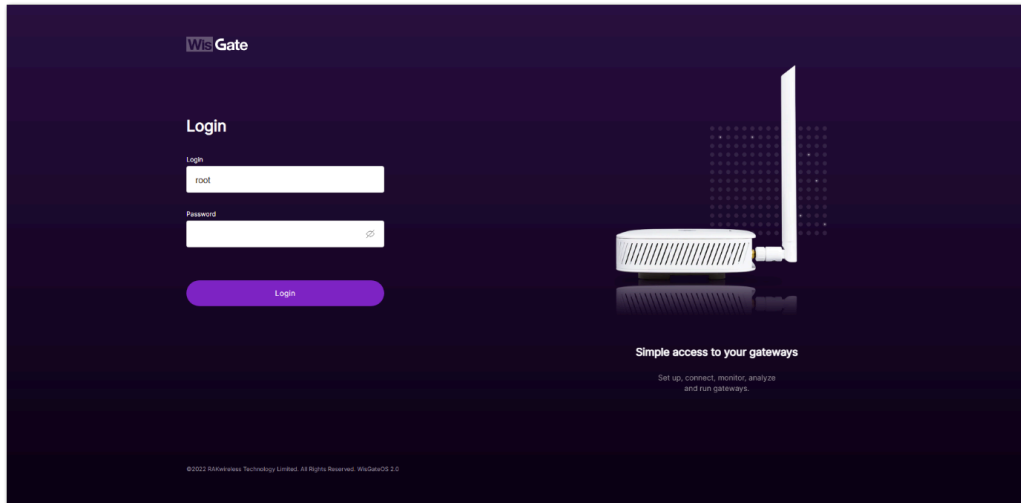


Figure 4: Login page with set password

WAN Port (Ethernet)

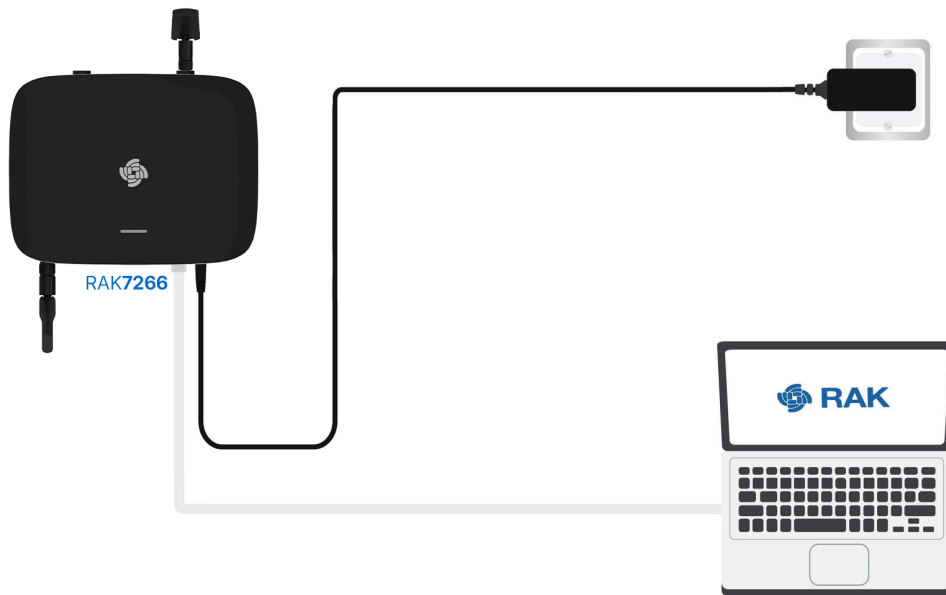


Figure 5: Accessing the gateway via WAN Port (Ethernet)

1. Connect the Ethernet cable from the gateway's **ETH** port to your PC's Ethernet port.
2. Set a static IP address on your PC in the same subnet as the gateway:

 **NOTE**

The default IP of the gateway is **169.254.X.X**, derived from the last 4 bits of the MAC address. For example, if the last 4 bits are **0F:01**, the gateway IP is **169.254.15.1**. Set your PC's IP address accordingly, e.g., **169.254.15.100**.

3. Open the **Internet Properties** of your PC, and select **Internet Protocol Version 4 (TCP/IPv4)**.

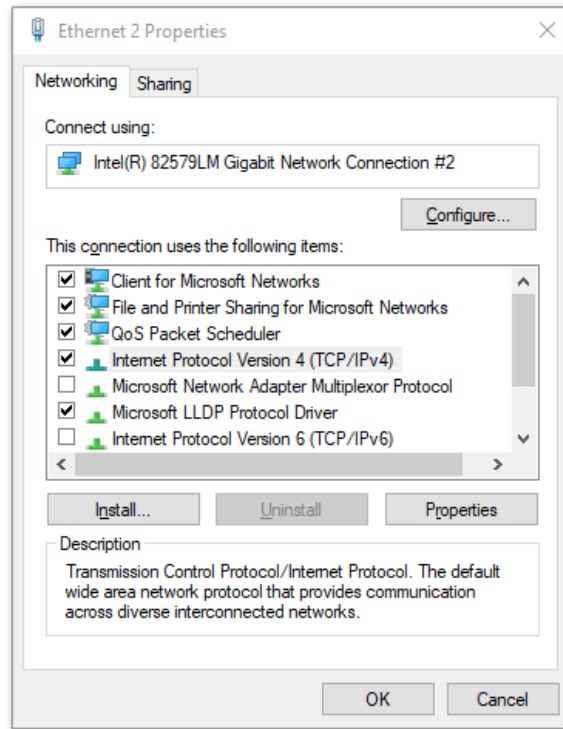


Figure 6: Internet properties

4. Select **Use the following IP address**, and set the PC' s IP address (e.g., 169.254.15.100). Ensure the PC' s IP address is in the same subnet as the gateway (e.g., if the gateway IP is 169.254.15.1, set the PC to 169.254.15.100).

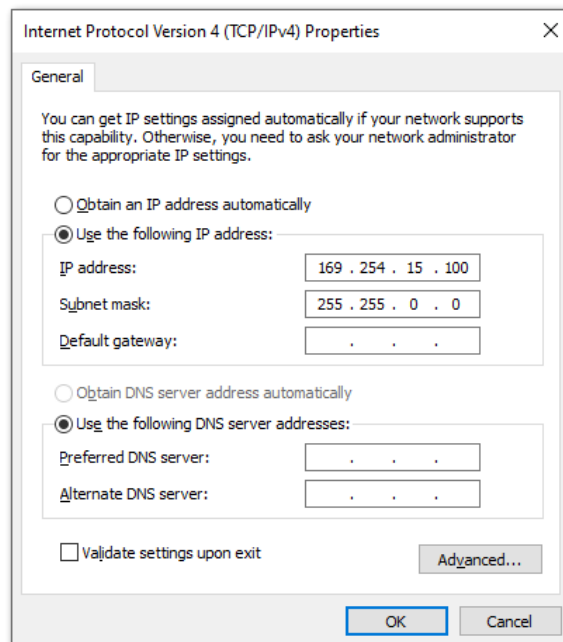


Figure 7: Setting IP address of the PC

In this example, you can access the gateway on the 169.254.15.1 address.

5. In a web browser, enter the gateway's IP (e.g., 169.254.15.1) to access the Web UI.
6. Set the login password following the same rules as in [WiFi mode](#).
7. After setting the password, the LoRaWAN Statistics page will load.
8. Use the username `root` and your password for future logins.

Connect the Gateway to the Internet

You can connect the gateway to the internet through Wi-Fi, Ethernet, or LTE. Multiple connection types can be configured at the same time.

Wi-Fi

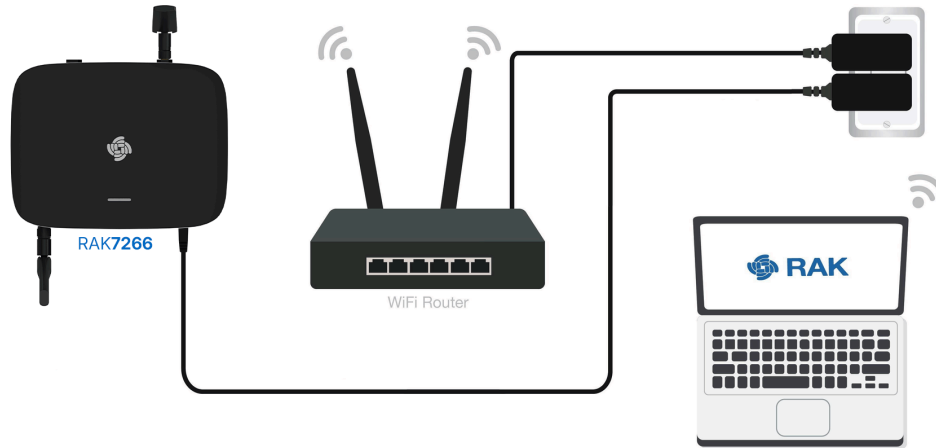


Figure 8: Connect the internet via WiFi

1. Log in to the Web UI, go to **Network > WAN > WiFi**.
2. Expand the WiFi section and click on **Settings**. Ensure the **Interface** is enabled.
3. Click the **Scan** button to select your **ESSID**, or manually enter the ESSID of the network by clicking **Enter network (E)SSID manually**.
4. Choose the correct **Encryption** method and enter the appropriate **Key**.

NOTE

Assuming you have entered the correct parameter values, you should receive an IP address assigned by your WiFi router's (AP) built-in DHCP server. You can use this new IP address to log in via a web browser.

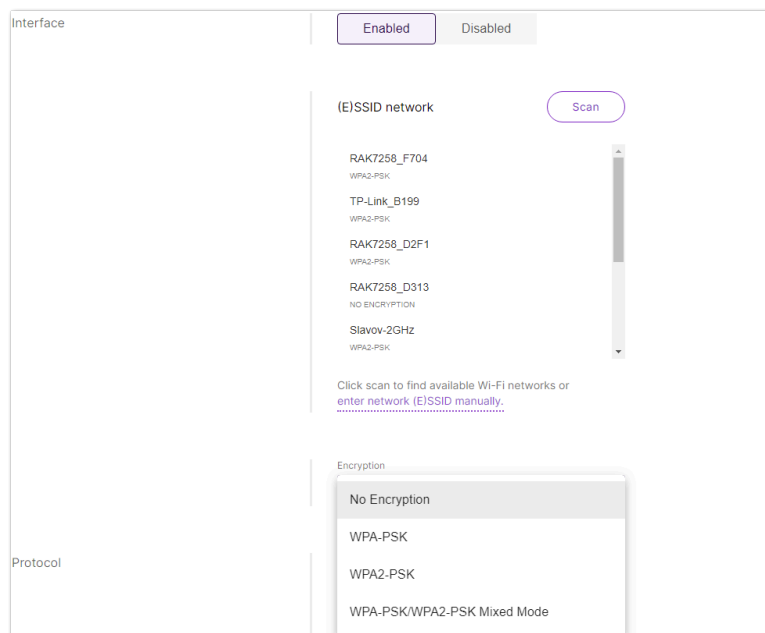


Figure 9: WiFi settings

For details, refer to the [WisGateOS 2 User Manual > WAN > Wi-Fi](#).

Ethernet

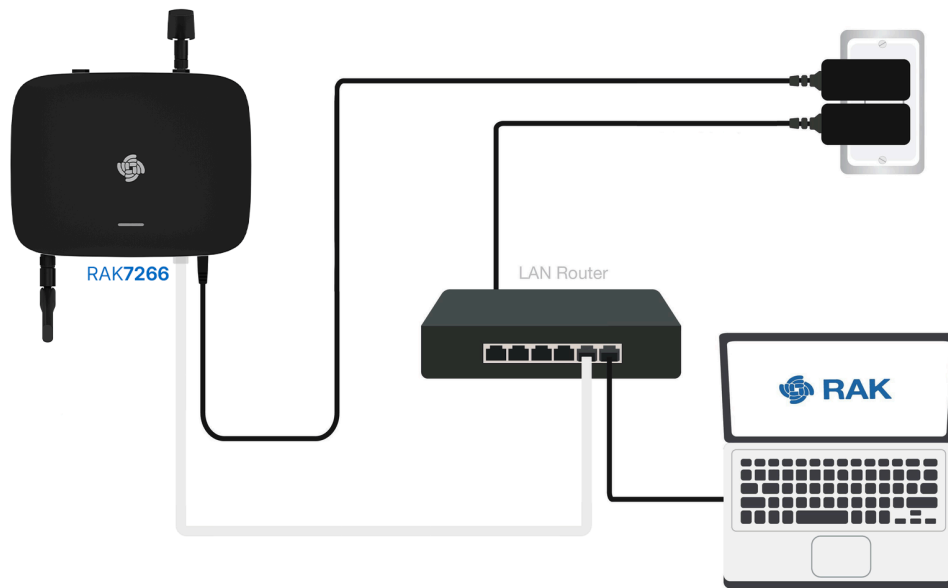


Figure 10: Accessing the Internet through Ethernet

1. Connect one end of an Ethernet cable to the gateway's ETH port, and the other end to your router.

NOTE

The router's DHCP server will automatically assign an IP address to the gateway. You can use this IP to access the gateway via a web browser.

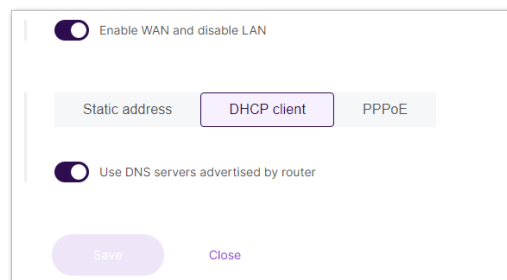


Figure 11: Connect through Ethernet settings

If additional configuration is required, refer to the [WisGateOS 2 User Manual > WAN > Ethernet](#).

Cellular

The RAK7266 WisGate Soho Lite includes built-in LTE support and will typically connect to the cellular network automatically once a valid SIM card is inserted.

However, in some regions, **manual APN configuration** may be required depending on your mobile operator.

To manually configure APN and other LTE settings:

1. Log in to the Web UI and navigate to **Network > WAN > Cellular**.
2. Expand the Cellular section and click on **Settings**.
3. Enter the required **APN, username, password, and PIN code** if provided by your mobile operator.

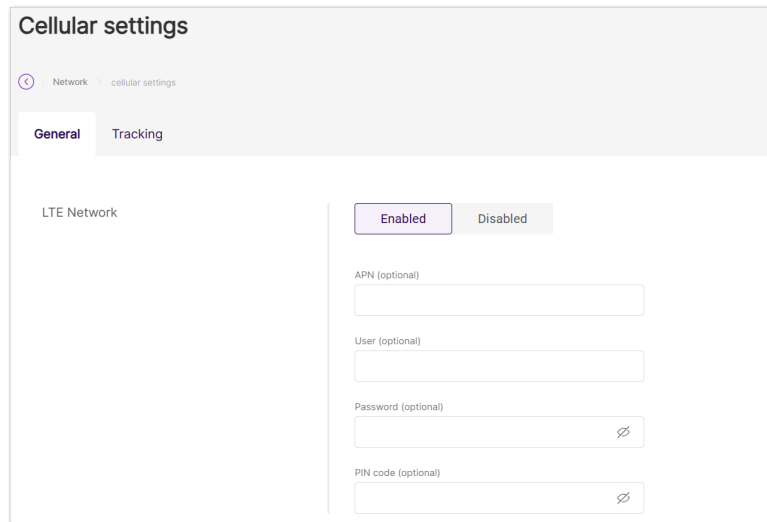


Figure 12: Connect through cellular settings

For details on each parameter, refer to the [WisGateOS 2 User Manual > WAN > Cellular](#).

NOTE

Make sure that your SIM card is activated and supports data services.

Connect to LoRaWAN® Network Server

Configure your gateway's work mode to quickly establish a connection with a LoRaWAN® Network Server. The gateway supports three operation modes — **Built-in Network Server**, **Packet Forwarder**, and **Basics™ Station**.

For detailed configuration steps and explanations, refer to the [LoRa Configuration Guide](#).