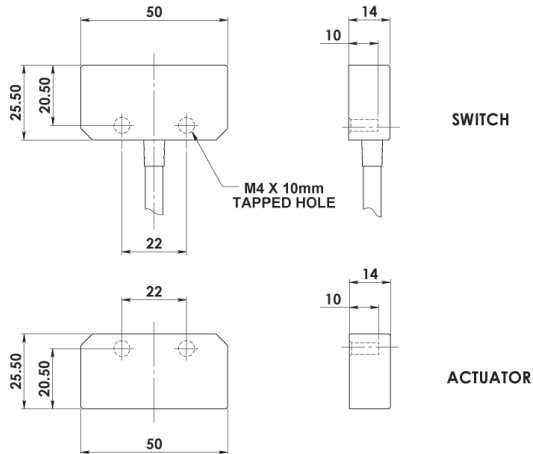


HYGIEMAG - Magnetic Non Contact Type: SMR-F

FEATURES:

Specifically designed for Food Processing applications
 Suitable for CIP and SIP cleaning - mounting holes at rear - no food traps
 Suitable for Food Contact Zones - EHEDG Guidelines
 Wide 12mm sensing with high tolerance to misalignment
 Universal housing - 22mm fixing hole centre - 50mm wide body
 Can be high pressure hosed at high temperature - IP69K
 Rear fixing with 2 x M4 tapped holes
 Up to: PLe ISO13849-1
 2NC 1NO circuits
 Quick Connect versions available

DIMENSIONS:

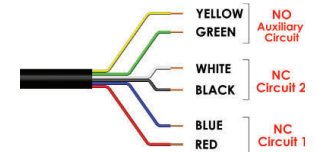
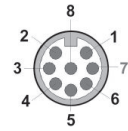
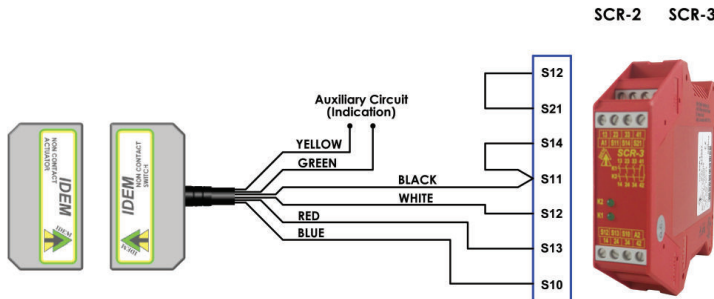


Stainless Steel 316 Housing mirror polished (Ra4)
Magnetic Actuation - Power Series
Medium Duty 230Vac 1.0A/24Vdc 1.0A
Switching Tolerance up to 12mm
Will operate with most Safety Relays



Quick Connect M12 versions fitted with 250mm (10") cable

CONNECTION EXAMPLE: Magnetic Switches



One switch connected to an SCR-2 or SCR-3 to give Dual Channel guard monitoring but with Automatic Start.

Standards: ISO14119 EN60947-5-3
 EN60204-1 ISO13849-1 EN62061 UL508

Safety Classification and Reliability Data:

Mechanical Reliability B10d	3.3 x 10 ⁸ operations at 100mA load
ISO13849-1	Up to PLe depending upon system architecture
Safety Data – Annual Usage	8 cycles per hour/24 hours per day/365 days
	MTTFd 470 years
Medium Duty	Safety Channel 1 NC Voltage Free: 250Vac 1.0A Max. Rating
	Safety Channel 2 NC Voltage Free: 250Vac 1.0A Max. Rating
	Safety Channel 3 NO Voltage Free: 24Vdc 0.2A Max. Rating
	Fuse Internal 1.0A (F) External 0.8A (F) (User)
	Contact Release Time <2ms
	Initial Contact Resistance <500 milliohm
	Minimum Switched Current 10Vdc 1mA
	Dielectric Withstand 250Vac
	Insulation Resistance 100 Mohms
	Recommended Setting Gap 5mm
	Switching Distance Sao 8mm Close
	(Target to Target) Sar 22mm Open
	Tolerance to Misalignment 5mm in any direction from 5mm setting gap
	Switching Frequency 1.0Hz maximum
	Approach Speed 200mm/min to 1000mm/sec
	Body Material Stainless Steel 316 mirror polished finish to Ra4
	Operating Temperature -25C +105C (CIP SIP cleaning)
	Enclosure Protection IP69K (NEMA PW12) IP67 (NEMA 6)
	Shock Resistance IEC68-2-27 11ms 30g
	Vibration Resistance IEC68-2-6 10-55Hz 1mm
	Cable Type PVC 6 core 6mm OD Conductors 0.25mm ²
	Mounting Bolts 2xM4 Tightening torque 1.0Nm
	Mounting Position Any

For all IDEM switches the normally closed (NC) circuits are closed when the guard is closed and the actuator is present.

Quick Connect QC M12 8 Way Male Plug Pin view from Switch	Standard Lead Colour	Circuit (Actuator Present)
4	Yellow	NO
6	Green	NO
7	Black	NC2
1	White	NC2
2	Red	NC1
3	Blue	NC1

SALES NUMBER	TYPE	CABLE LENGTH	CIRCUITS
137009	Hygiemag SMR-F	2M	2NC
137010	Hygiemag SMR-F	5M	2NC
137011	Hygiemag SMR-F	10M	2NC
137012	Hygiemag SMR-F	QC-M12	2NC
137013	Hygiemag SMR-F	2M	2NC 1NO
137014	Hygiemag SMR-F	5M	2NC 1NO
137015	Hygiemag SMR-F	10M	2NC 1NO
137016	Hygiemag SMR-F	QC-M12	2NC 1NO
137017	Hygiemag SMR-F	2M	1NC
137018	Hygiemag SMR-F	5M	1NC
137019	Hygiemag SMR-F	10M	1NC
137020	Hygiemag SMR-F	QC-M12	1NC
137021	Hygiemag SMR-F	2M	1NC 1NO
137022	Hygiemag SMR-F	5M	1NC 1NO
137023	Hygiemag SMR-F	10M	1NC 1NO
137024	Hygiemag SMR-F	QC-M12	1NC 1NO

140101	Female QC Lead	M12 Female 5m. 8 way
140102	Female QC Lead	M12 Female 10m. 8 way